

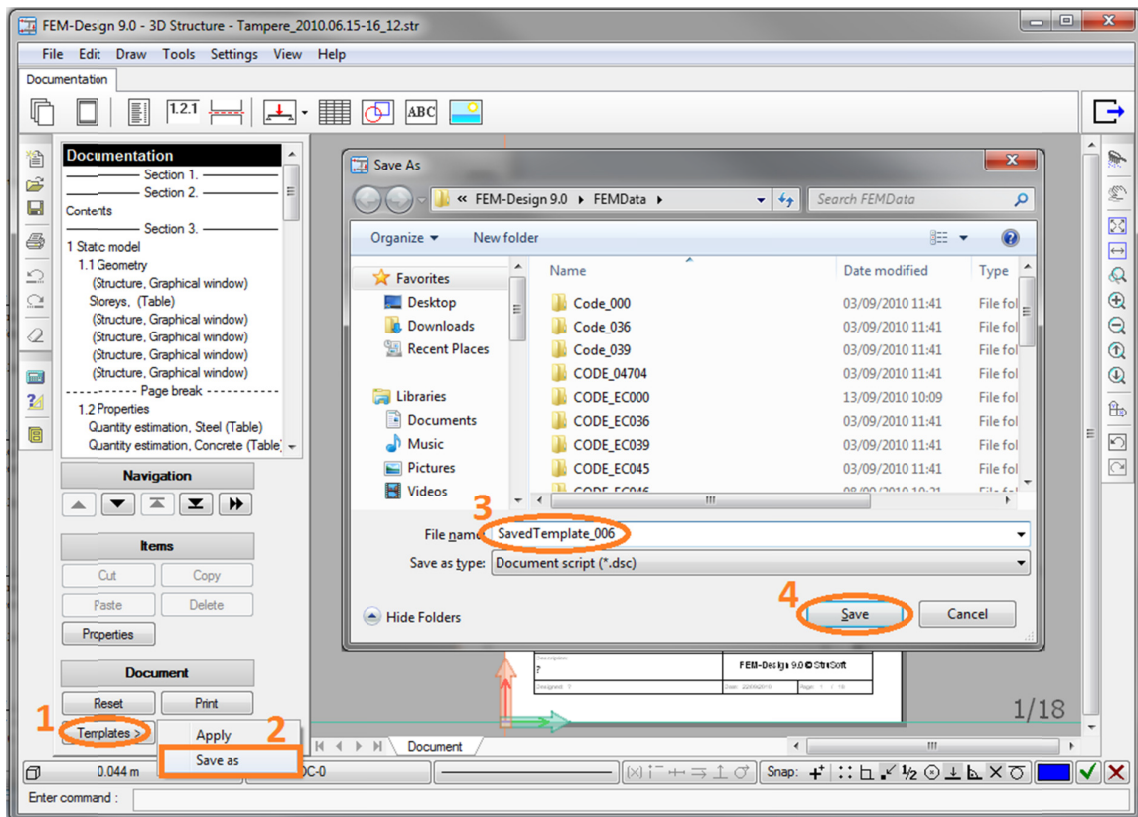
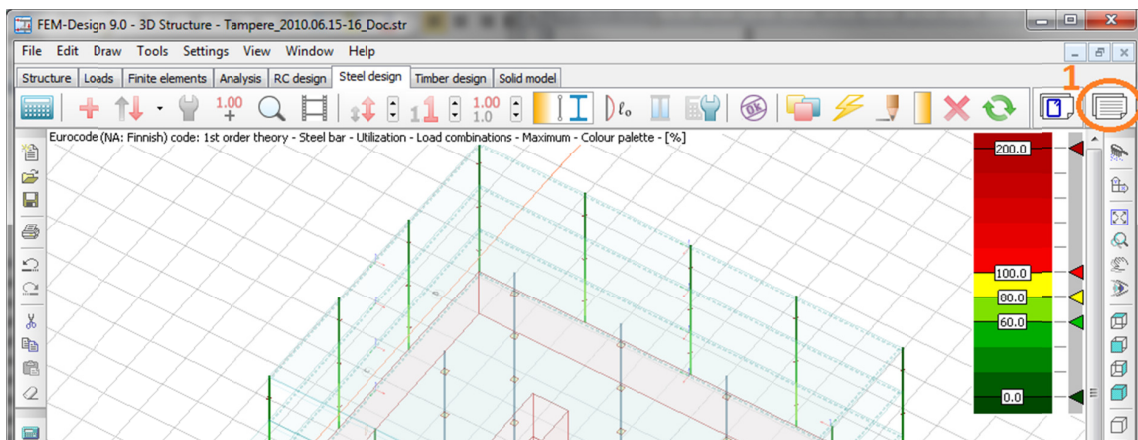
Steps to Backup the Documentation

Due to some bug fixing and compatibility problem, existing documentation that is created or saved in version 9.00.006 or earlier would be deleted in version 9.00.010 and later. But there is a way to Backup and later bring back the documentation in the new version.

Follow the step to create backup from your existing document.

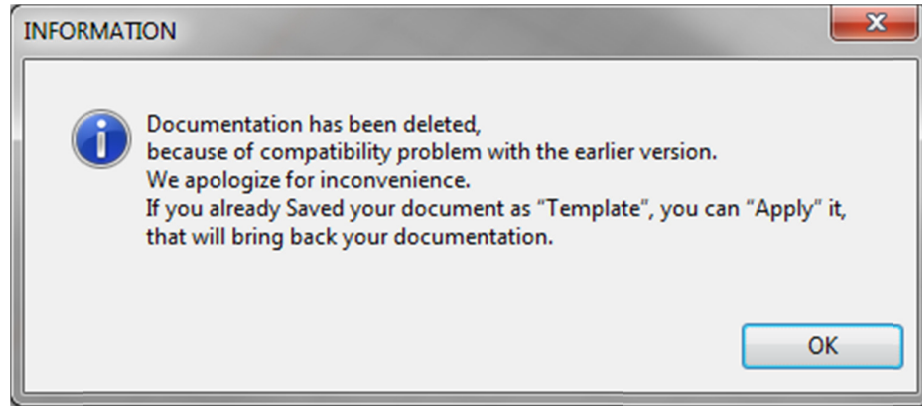
1. Before UNINSTALLING 9.00.006 or earlier

Follow the steps that are indicated by numbers, to create Template, which would be later used in 9.00.010 or later to recover your documentation.



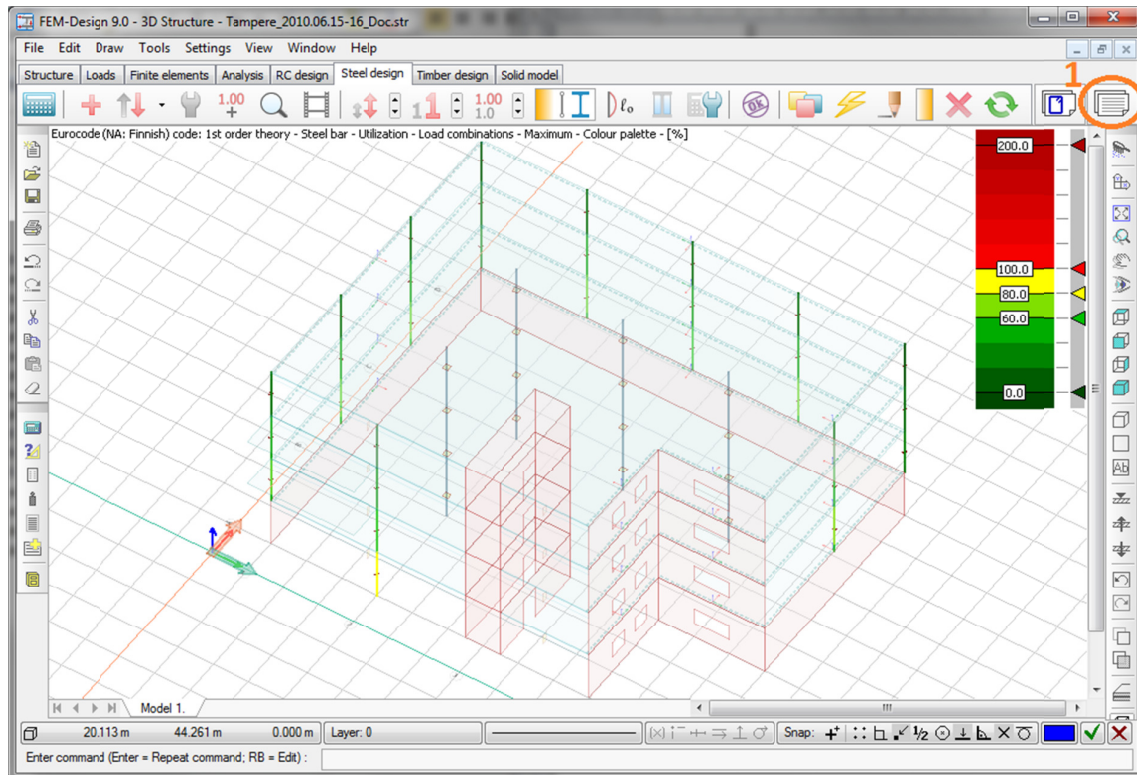
2. After installing 9.00.010 or later

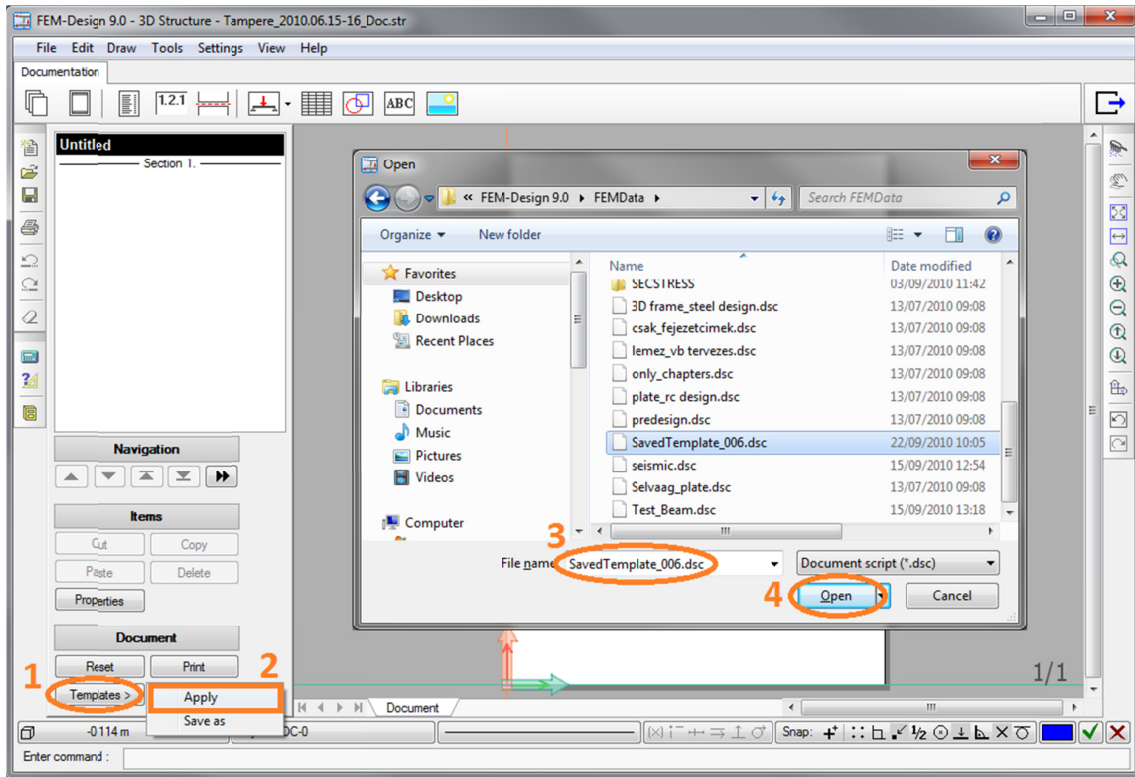
While loading the file that includes documentation and is older than 9.00.010, program will delete the document and notify with the following message.



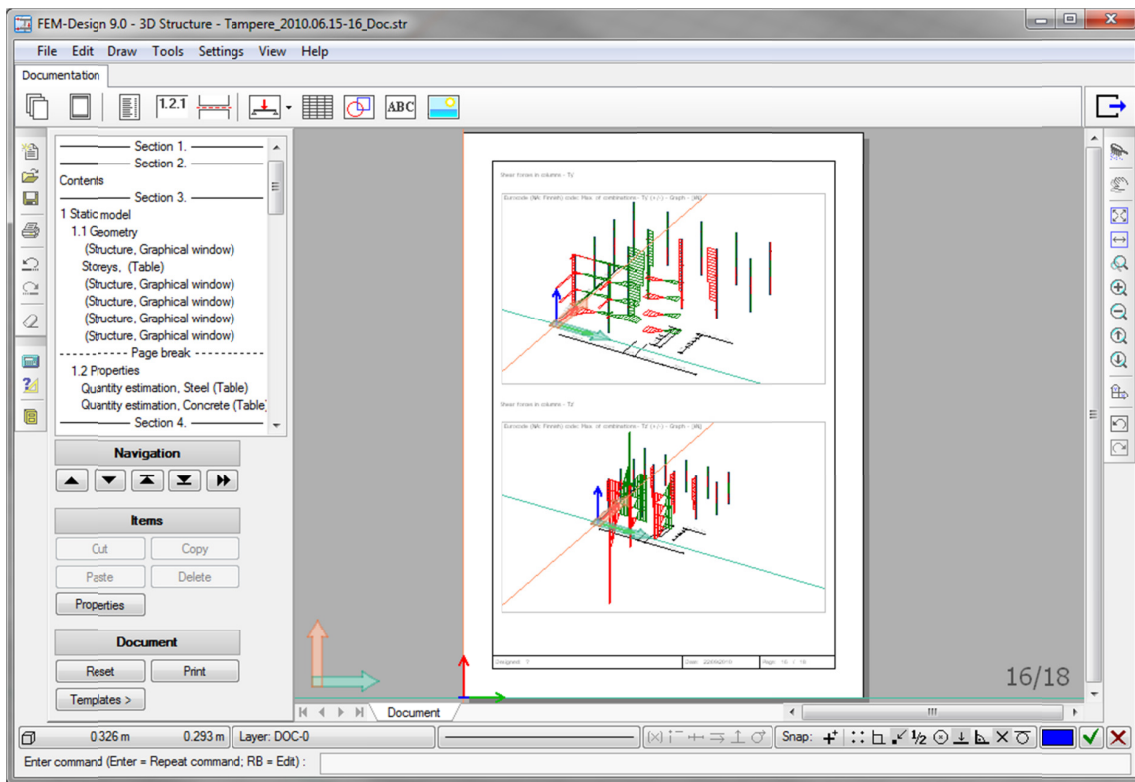
2.1. Run the necessary calculation to validate the results.

2.2. Follow the steps to recreate the documentation.





After Applying the Template, documentation would return back.



Note; the Template do not keep the **Numerical Values** and not including **Detailed Results**. Numerical values and detailed results should be inserted again!